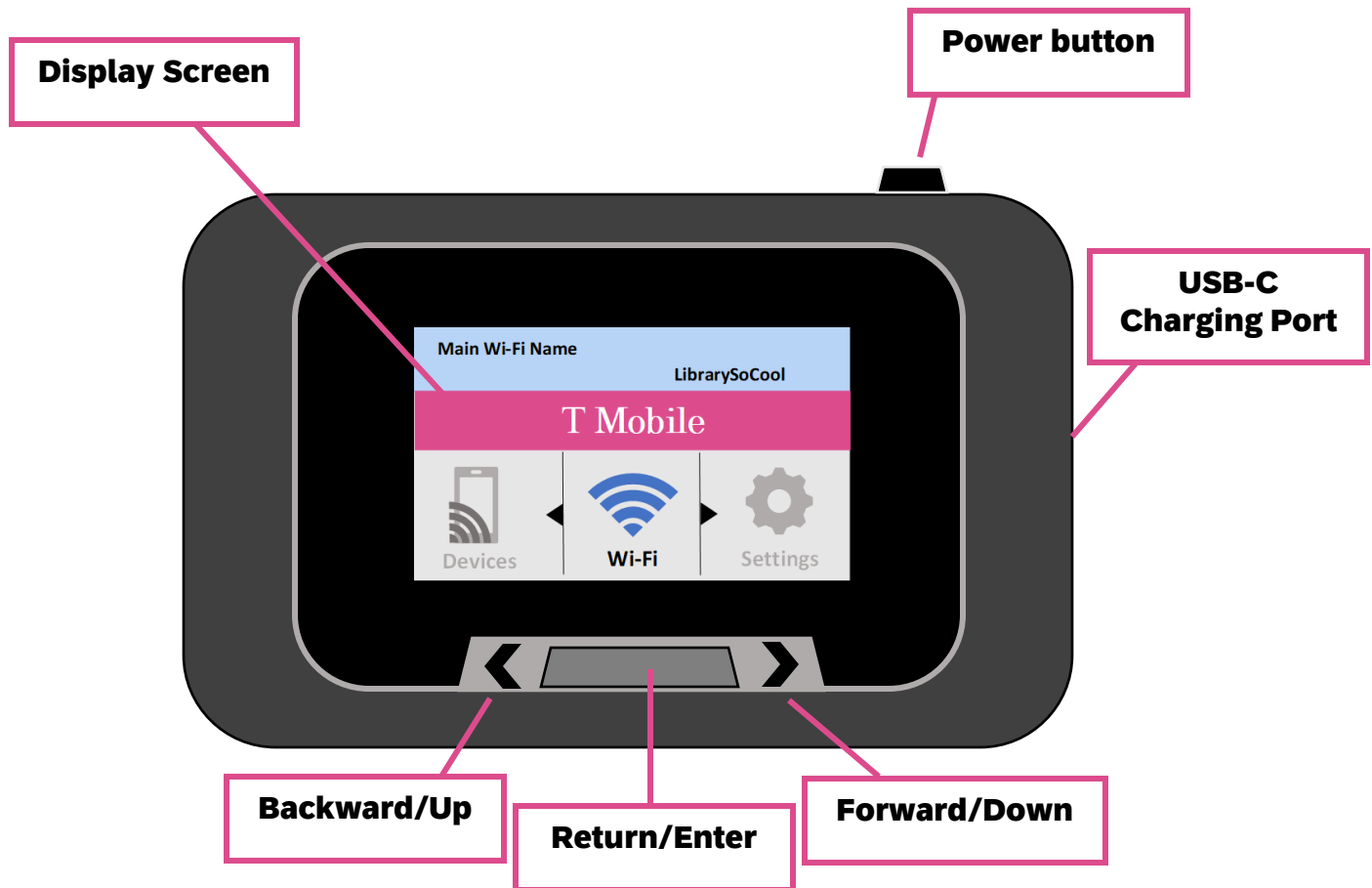




Hotspot Lending Program Guide



Phoenix Public Library



Powering On the Hotspot

- Place the hotspot on a flat surface and plug in the supplied USB-C charging cable into the USB-C Charging Port.
- Plug the USB end of the charging cable into the supplied power block and plug the charger into a power outlet.
- A battery symbol will appear on the small display screen, showing that the hotspot is charging.
- Press and hold the power button to turn on the hotspot. It may take several seconds to turn on.

Displaying the Hotspot Wi-Fi Network Name and Password

- When powered on, the hotspot displays the **Wi-Fi name and password at the top of the screen** along the blue banner. You can also click ENTER on the Wi-Fi icon to display the same information.
- To ensure the best user experience, it is not recommended to adjust any Settings on the device.

(This information is also available on the back of the hotspot.)

Connecting the Hotspot to a Device

- On your device, navigate to the Wi-Fi settings and click on the name of the Wi-Fi network. Enter the password to connect.
- The hotspot will connect and give you online access.
- You can view connected devices by clicking on the Devices icon and selecting Connected Devices.
- When you're done using the hotspot, push and hold the Power button. The hotspot will display a Goodbye message and turn off.